








A close-up, vertical view of a cylindrical filter cartridge. The surface is covered in a dense, uniform pattern of small, circular perforations. The lighting is dramatic, coming from the right, which creates a strong highlight along the right edge of the cylinder and casts deep shadows within the perforations, emphasizing the texture and three-dimensional quality of the mesh.

Filter Cartridge Replacement

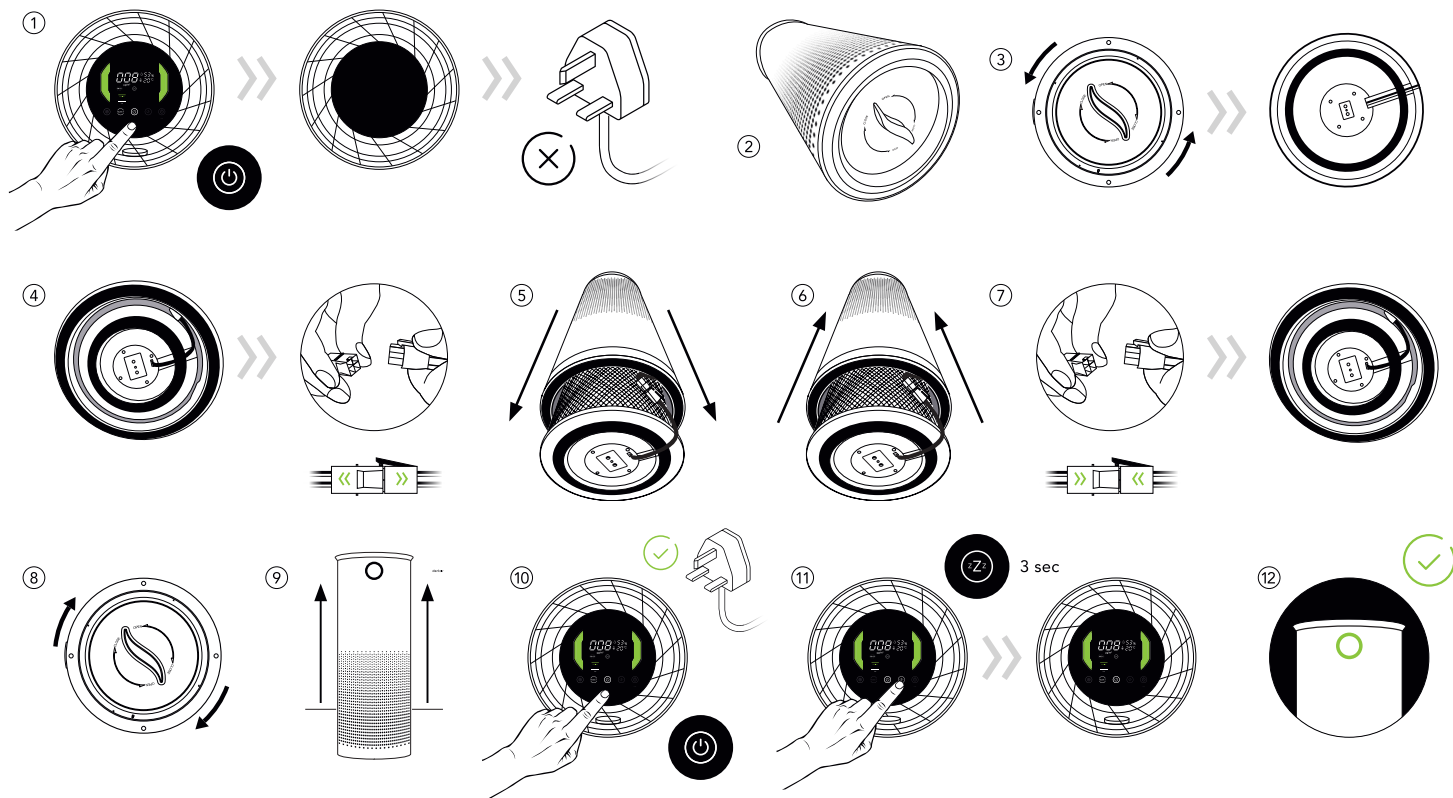
PAFCT2B/BL

A **BRYANT MEDICAL** PRODUCT

Changing The Air Purifier Filter Cartridge

-  Prepare for changing the filter cartridge by wearing a face mask and disposable gloves.
-  UV radiation can be harmful to the eyes and skin. Do not operate the UVC-emitter outside the appliance.
-  Always turn off the power by disconnecting the plug from the socket before carrying out maintenance, cleaning or changing the fan position.
-  Make sure the air purifier is stopped before cleaning. Do not attempt to clean the HEPA/Carbon filters with a grinding sponge, scouring pad or hard brush.
-  Do not flush or drench the air filter.
-  When not in use, please store in a dry place with good ventilation.
-  If the power line or plug is damaged, immediately stop using.

- ① Turn off the power on the unit and disconnect from the power supply.
- ② Gently lie the unit down on the ground taking care to not handle the unit by the top vent.
- ③ Carefully twist the lid off the bottom of the unit (by twisting anti-clockwise) and lift the lid off.
- ④ Disconnect the wire that connects the filter cartridge and the air purifier unit by unclipping at the connector (this is tucked down the side of the unit between the inside of the unit and outside of the filter).
- ⑤ Slide the old filter out of the unit and dispose of it by putting it in the waste bin.
- ⑥ Slide the new filter cartridge into the base of the unit with the solid base positioned nearest the bottom of the unit.
- ⑦ Connect the wire from the base of the new filter cartridge to the unit via the wire connector. Tuck this wire in the gap between the inside of the unit and the outside of the new filter.
- ⑧ Carefully replace the lid (twisting clockwise).
- ⑨ Stand your air purifier back up so the LED touchscreen on top faces the ceiling.
- ⑩ Reconnect the power supply and power on the machine.
- ⑪ Press and hold the sleep button for three seconds to recalibrate the unit with the new filters.
- ⑫ Your device is now ready to use as normal.



⚠ Do not operate without both HEPA & Black Carbon Filter in place.



Parts List:

Part Name	Part Code	Supplier
Filter Cartridge	PAFCT2B/BL	Bryant Medical



This product helps protect against certain particulate contaminants but does not eliminate exposure to or risk of contracting disease or infection. It is NOT a Medical device.



+44 (0)1932 553023

Bryant Medical Ltd, The Barns, Hilltop Farm, Lyne Lane, Lyne, KT16 0AW

IFU_EN1_0/IF Oct 2020